

Did You Know?

A' Design Award is the World's Largest Design Competition.

[Register Now >](#)

[Login](#)

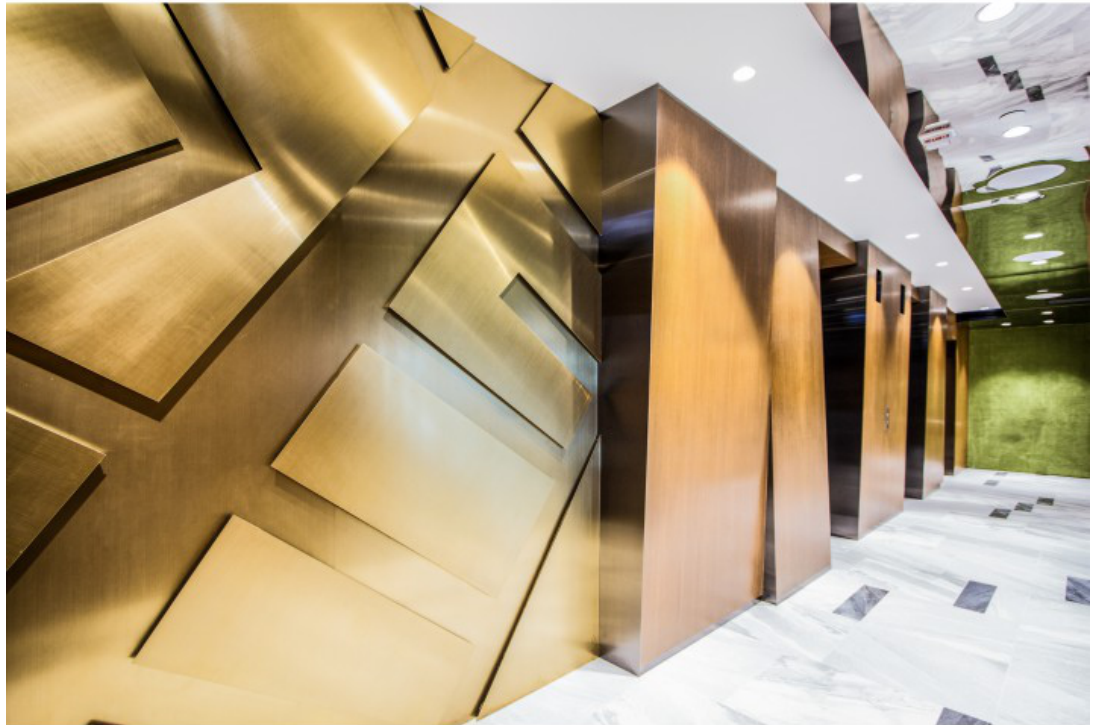
[THE AWARD](#) | [JURY](#) | [CATEGORIES](#) | [REGISTRATION](#) | [PRESS](#) | [WINNERS](#) | [PUBLICATIONS](#) | [ENTRY INSTRUCTIONS](#)

Centaline Club Clubhouse Design by Plotcreative Interior Design Ltd

[Home > Winners > #59443](#)



- [THE AWARD](#)
- [CATEGORIES](#)
- [REGISTRATION](#)
- [SUBMIT YOUR WORK](#)
- [ENTRY INSTRUCTIONS](#)
- [TERMS & CONDITIONS](#)
- [PUBLICATIONS](#)
- [DATES & FEES](#)
- [METHODOLOGY](#)
- [CONTACT](#)
- [WINNERS](#)
- [PRESS ROOM](#)
- [GET INVOLVED](#)
- [DESIGN PRIZE](#)
- [DESIGN STORE](#)



A' DESIGN AWARD & COMPETITION 

AWARD WINNING DESIGN
IRON A' DESIGN AWARD

2018

A' DESIGN AWARD & COMPETITION



DESIGN DETAILS

DESIGN NAME:
Centaline Club

PRODUCTION / REALIZATION TECHNOLOGY:
Inserted stainless steel material into the space, these wave

Did You Know?

A' Design Award is the World's Largest Design Competition.

[Register Now >](#)

INSPIRATION:

Make from urban grid of bird view city pattern is the surprising focal point of Centaline Club. The 'MAP' to create wall patterns and form inspire from HK's architecture. Centaline Club design begins at the lift lobby, which is clad in an aggressive mixture of finish materials that confront you step out of the lift. Marble flooring with a lively patterns, a segment of wall in gold-toned metal featuring a two-dimensional relief forward and back as of the city were experiencing a small earthquake.

UNIQUE PROPERTIES / PROJECT DESCRIPTION:

Centaline is one of Hong Kong's largest property agencies with agents placed strategically in offices all over the city. Centaline Club is essentially a multifunction room built for gatherings of agents and clients. In which Centaline can showcase new projects, upcoming real estate events or specialist exhibits.

OPERATION / FLOW / INTERACTION:

For the design status, we studying how to give the natural and comfortable for all visit. we try to use the flooring material-carpet install on the ceiling. It's can be more comfortable and special on the ceiling design. Hire Drones to shooting some bird-view photos on the Hong Kong's sky is a excellent experience.

PROJECT DURATION AND LOCATION:

Tsim Sha Tsui, Hong Kong

FITS BEST INTO CATEGORY:

Interior Space and Exhibition Design

materials going on here. It's not easy to marry coffee-toned wood veneers, loud marble flooring. Polished metals and bright carpeting all with different patterning and avoid a generally 1990s vibe. They do stay on the better side of the palette... just. Or maybe the undertone of nostalgia in colours and materials is deliberate a nod to the city's property past. When all of these materials had their prominent place in the public mindset as monikers of real estate value. Lord knows plenty of people made plenty of money over the decades investing in the stuff Centaline specializes in: Hong Kong flats. Even today, apparently, surfaces clad in marble, veneers and shiny metals represent real estate success. This highly functional space may be a wink at where all that money still goes. Either way, this isn't your average real estate office.

SPECIFICATIONS / TECHNICAL PROPERTIES:

350 sq.m

TAGS:

Clubhouse, Property, Map

RESEARCH ABSTRACT:

Research the Hong Kong bird-view is vert difficult. We should hire Drones player to shooting bird-view from Hong Kong Island to the Kowloon. And find some good form on street to modify and create on to the wall design.

CHALLENGE:

From the contracting said, the ceiling structure was make a double layer. The Hardest part should be carpet how to fixing on the ceiling. Also the lobby 3D wall and bird-view feature wall was the hardest part for the production. Because from the design, we were create the concept. From the Drones shoot some photo, we a look more than 1000 bird-view pictures to find look like street and find the street name. It is the hardest part for the research challenge.

ADDED DATE:

2017-08-13 00:52:53

TEAM MEMBERS (1) :

Oscar Chan, Sandy Lai

IMAGE CREDITS:

PLOTCREATIVE Interior Design Limited

PATENTS/COPYRIGHTS:

PLOTCREATIVE Interior Design Limited

Visit the following page to learn more: <http://www.plotcreativehk.com>

CLIENT/STUDIO/BRAND DETAILS**NAME:**

PLOTCREATIVE Interior Design Limited

**PROFILE:**

PLOTCREATIVE Interior Design Ltd, based in Hong Kong and established in 2013, is an award-winning interior design practice with a reputation for unique interiors. PLOTCREATIVE has been focusing on planning and designing large-scale commercial projects including Sales Center, F&B, Entertainment, Clubhouse, Retail and Showflat. It has established strategic partnership of mutual benefits with its clients and has successfully planned numerous Hong Kong and China famous brands and listed company.

AWARD DETAILS

**A' DESIGN AWARD
& COMPETITION**



Centaline Club Clubhouse Design by Plotcreative Interior Design Ltd is Winner in Interior Space and Exhibition Design Category, 2017 - 2018.

· Press Members: [Login or Register](#) to request an exclusive interview with Plotcreative Interior Design Ltd.

· [Click here](#) to register in order to view the profile and other works by Plotcreative Interior Design Ltd.

SOCIAL

Did You Know?

A' Design Award is the World's Largest Design Competition.

[Register Now >](#)

**Did you like Plotcreative Interior Design Ltd's Interior Design?
You will most likely enjoy other award winning interior designs as well.
[Click here to view more Award Winning Interior Designs.](#)**

Did you like Centaline Club Clubhouse Design? Help us create a global awareness for good interior design worldwide. Show your support for Plotcreative Interior Design Ltd, the creator of great interior design by gifting them a [nomination ticket](#) so that we could promote more of their great interior designs.

[See Winners >](#)[Discover A'](#)[Register Now >](#)

A'DESIGN AWARD & COMPETITION

BENEFITS

[THE DESIGN PRIZE](#)
[WINNERS SERVICES](#)
[PR CAMPAIGN](#)
[PRESS RELEASE](#)
[MEDIA CAMPAIGNS](#)
[AWARD TROPHY](#)
[AWARD CERTIFICATE](#)
[AWARD WINNER LOGO](#)
[PRIME DESIGN MARK](#)
[BUY & SELL DESIGN](#)
[DESIGN BUSINESS NETWORK](#)
[AWARD SUPPLEMENT](#)

METHODOLOGY

[DESIGN AWARD JURY](#)
[PRELIMINARY SCORE](#)
[VOTING SYSTEM](#)
[EVALUATION CRITERIA](#)
[METHODOLOGY](#)
[BENEFITS FOR WINNERS](#)
[PRIVACY POLICY](#)
[ELIGIBILITY](#)
[FEEDBACK](#)
[WINNERS' MANUAL](#)
[PROOF OF CREATION](#)
[WINNER KIT CONTENTS](#)
[FAIR JUDGING](#)
[AWARD YEARBOOK](#)
[AWARD GALA NIGHT](#)
[AWARD EXHIBITION](#)

MAKING AN ENTRY

[ENTRY INSTRUCTIONS](#)
[REGISTRATION](#)
[ALL CATEGORIES](#)

FEES & DATES

[FURTHER FEES POLICY](#)
[MAKING A PAYMENT](#)
[PAYMENT METHODS](#)
[DATES & FEES](#)

TRENDS & REPORTS

[DESIGN TRENDS](#)
[DESIGNER REPORTS](#)
[DESIGNER PROFILES](#)
[DESIGN INTERVIEWS](#)

ABOUT

[THE AWARD](#)
[AWARD IN NUMBERS](#)
[HOMEPAGE](#)
[AWARD WINNING DESIGNS](#)
[DESIGNER OF THE YEAR](#)
[MUSEUM OF DESIGN](#)
[PRIME CLUBS](#)
[SITEMAP](#)
[RESOURCE](#)

RANKINGS

[DESIGNER RANKINGS](#)
[WORLD DESIGN RANKINGS](#)
[DESIGN CLASSIFICATIONS](#)
[POPULAR DESIGNERS](#)

CORPORATE

[GET INVOLVED](#)
[SPONSOR AN AWARD](#)
[BENEFITS FOR SPONSORS](#)

PRESS

[DOWNLOADS](#)
[PRESS-KITS](#)
[PRESS PORTAL](#)
[LIST OF WINNERS](#)
[PUBLICATIONS](#)
[RANKINGS](#)
[CALL FOR ENTRIES](#)
[RESULTS ANNOUNCEMENT](#)

CONTACT US

[CONTACT US](#)
[GET SUPPORT](#)

Follow us : [Twitter](#) | [Facebook](#) | [Google+](#).

Share |